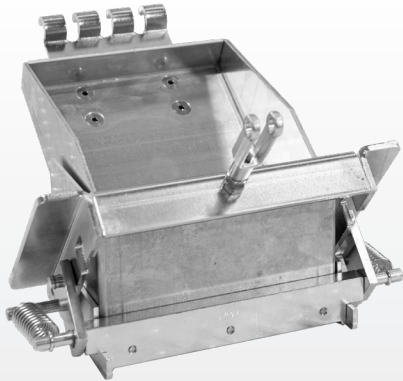


**ADVANCED
STRIPING
EQUIPMENT**

**THERMOMARK
DIES**

THERMOPLASTIC EXTRUSION DIES

HEAVY-DUTY STEEL DIES

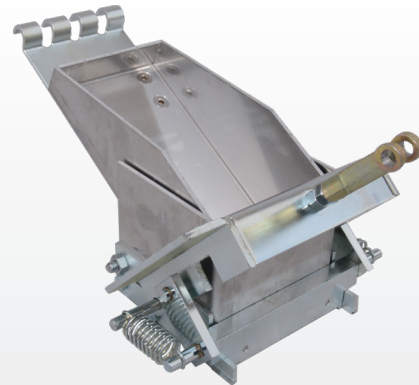


- *Heavy-duty steel design*
- *Superior heat retention*
- *Won't swell or warp*
- *Swivel claw standard on all steel dies*

FEATURES & BENEFITS

- *Fits most competitors aluminum frame handliners*
- *Available in .090 mil, .125 mil and ADJ*
- *Made of 3/16" steel*
- *Available in 4", 6", 8" and 12" widths*
- *Quick release connection carbide tip runners and springs*

ALUMINUM DIES



- *Lightweight, heavy-duty aluminum design*
- *Less drag*
- *Fastest heat time, from 0°F to 400°F*
- *Cost savings*

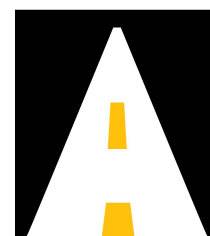
FEATURES & BENEFITS

- *Optional Die Swivel Claw Available*
- *Double Dies Available*
- *HD Springs = Part No: ASE15000006*
- *Die Runner = Part No: ASE15000004*



2811 Fiechtner Drive Fargo, ND 58103
epicsolutions.us

Phone: (701) 277-9017 Fax: (701) 277-7073



**ADVANCED
STRIPING
EQUIPMENT**

THERMOPLASTIC EXTRUSION DIES

Aluminum Extrusion Dies

DESCRIPTION	PART NO.
Standard Die 4" 0.060 mil	ASE15100000A.060
Standard Die 4" 0.090 mil	ASE15100000A.090
Standard Die 4" 0.125 mil	ASE15100000A.125
Standard Die 4" ADJ	ASE15100000A.ADJ
Standard Die 5" 0.060 mil	ASE15200000A.060
Standard Die 5" 0.090 mil	ASE15200000A.090
Standard Die 5" 0.125 mil	ASE15200000A.125
Standard Die 5" ADJ	ASE15200000A.ADJ
Standard Die 6" 0.060 mil	ASE15300000A.060
Standard Die 6" 90 mil	ASE15300000A.090
Standard Die 6" 0.125 mil	ASE15300000A.125
Standard Die 6" ADJ	ASE15300000A.ADJ
Standard Die 8" 0.060 mil	ASE15400000A.060
Standard Die 8" 0.090 mil	ASE15400000A.090
Standard Die 8" 0.125 mil	ASE15400000A.125
Standard Die 8" ADJ	ASE15400000A.ADJ
Standard Die 9" 0.060 mil	ASE15500000A.060
Standard Die 9" 0.090 mil	ASE15500000A.090
Standard Die 9" 0.125 mil	ASE15500000A.125
Standard Die 9" ADJ	ASE15500000A.ADJ
Standard Die 10" 60 mil	ASE15600000A.060
Standard Die 10" 90 mil	ASE15600000A.090
Standard Die 10" 0.125 mil	ASE15600000A.125
Standard Die 10" ADJ	ASE15600000A.ADJ
Standard Die 12" 0.060 mil	ASE15700000A.060
Standard Die 12" 90 mil	ASE15700000A.090
Standard Die 12" 0.125 mil	ASE15700000A.125
Standard Die 12" ADJ	ASE15700000A.ADJ
Standard Die 16" 90 mil	ASE16100000A.090
Standard Die 16" ADJ	ASE16100000A.ADJ
Standard Die 18" 90 mil	ASE16200000A.090
Standard Die 18" 125 mil	ASE16200000A.125
Standard Die 18" ADJ	ASE16200000A.ADJ
Standard Die 20" 0.090 mil	ASE16400000A.090
Standard Die 20" ADJ	ASE16400000A.ADJ
Double Die 4" x 4" x 4" 60 mil	ASE17100000A.060
Double Die 4" x 4" x 4" 90 mil	ASE17100000A.090
Double Die 4" x 4" x 4" 125 mil	ASE17100000A.125
Double Die 4" x 4" x 4" ADJ	ASE17100000A.ADJ
Double Die 4" x 3" x 4" 90 mil	ASE17200000A.090

Aluminum Extrusion Dies - Cont.

DESCRIPTION	PART NO.
Double Die 4" x 3" x 4" 125 mil	ASE17200000A.125
Double Die 4" x 3" x 4" ADJ	ASE17200000A.ADJ
Double Die 4" x 6" x 4" 90 mil	ASE17300000A.090
Double Die 4" x 6" x 4" 125 mil	ASE17300000A.125
Double Die 4" X 6" X 4" ADJ	ASE17300000A.ADJ
Double Die 4" x 5" x 4" 90 mil	ASE17400000A.090
Double Die 4" x 5" x 4" 125 mil	ASE17400000A.125
Double Die 4" x 5" x 4" ADJ	ASE17400000A.ADJ
Double Die 5" x 4" x 5" 90 mil	ASE17600000A.090
Double Die 5" x 4" x 5" 125 mil	ASE17600000A.125
Double Die 5" x 4" x 5" ADJ	ASE17600000A.ADJ
Double Die 6" x 4" x 6" 90 mil	ASE17700000A.090
Double Die 6" x 4" x 6" 125 mil	ASE17700000A.125
Double Die 6" x 4" x 6" ADJ	ASE17700000A.ADJ
Double Die 5" x 5" x 5" 90 mil	ASE17800000A.090
Double Die 5" x 5" x 5" ADJ	ASE17800000A.ADJ
Double Die 4" x 8" x 4" 90 mil	ASE18200000A.090
Double Die 6" x 5" x 6" 90 mil	ASE18400000A.090
Double Die 6" x 3" x 6" 90 mil	ASE18500000A.090

Steel HD Extrusion Dies

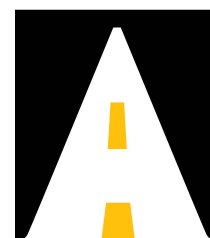
DESCRIPTION	PART NO.
Steel Die 4" 0.090 mil	ASE15100000A.090S
Steel Die 4" 0.125 mil	ASE15100000A.125S
Steel Die 6" 90 mil	ASE15300000A.090S
Steel Die 6" 0.125 mil	ASE15300000A.125S
Steel Die 6" ADJ	ASE15300000A.ADJS
Steel Die 8" 0.090 mil	ASE15400000A.090S
Steel Die 8" 0.125 mil	ASE15400000A.125S
Steel Die 8" ADJ	ASE15400000A.ADJS
Steel Die 12" 0.090 mil	ASE15700000A.090S
Steel Die 12" 0.125 mil	ASE15700000A.125S
Steel Die 12" ADJ	ASE15700000A.ADJS

Misc. Common Parts

DESCRIPTION	PART NO.
Die Closing Spring (HD, Black)	ASE15000006
Die Closing Spring (Standard, Zinc)	ASE150000060
Die Runner	ASE15000004
Die Swivel Claw	ASE15000020A
Metal Tray	ASE600B0001



2811 Flechtner Drive Fargo, ND 58103
 epicsolutions.us
 Phone: (701) 277-9017 Fax: (701) 277-7073



ADVANCED
 STRIPING
 EQUIPMENT