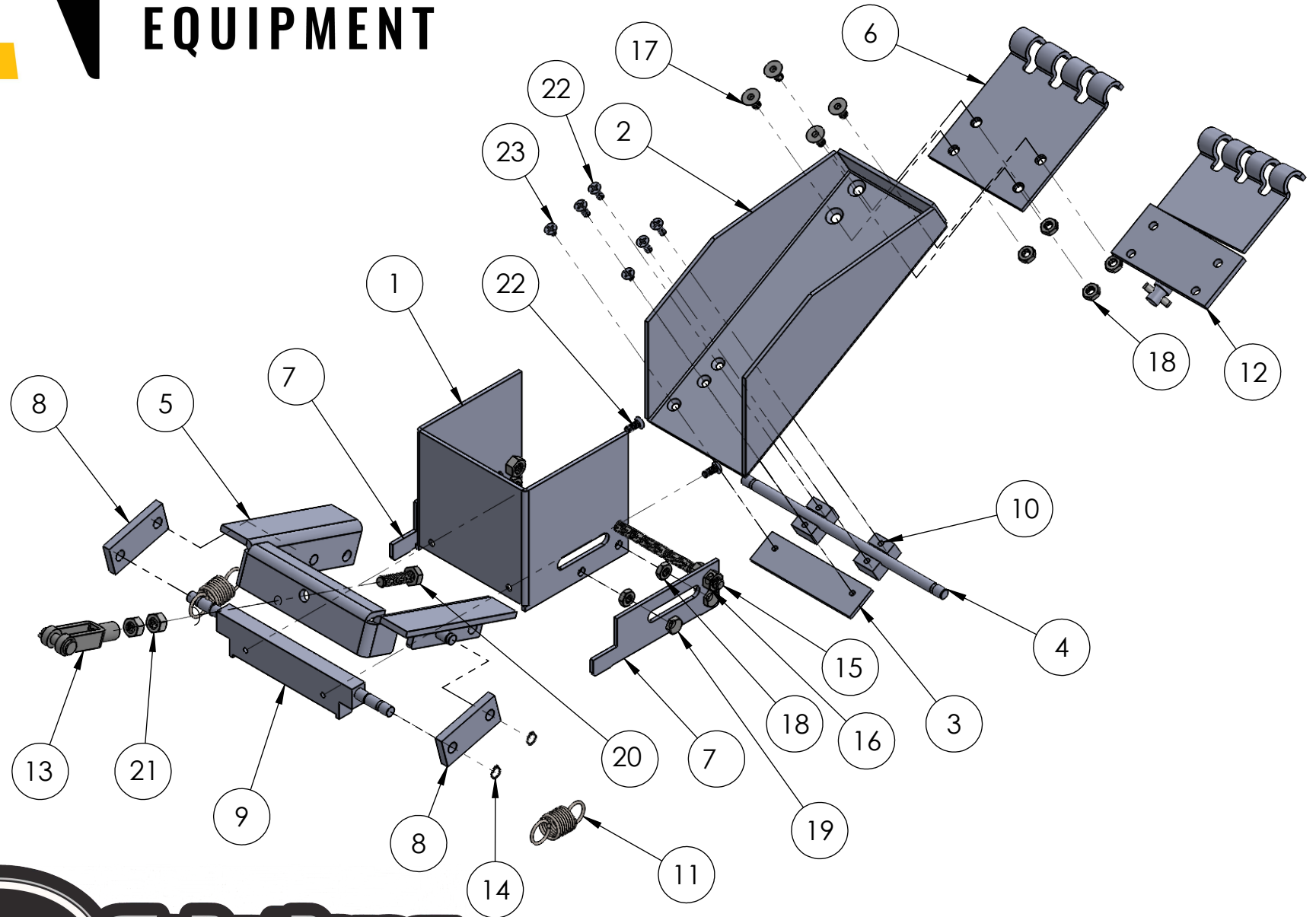


**ADVANCED  
STRIPING  
EQUIPMENT**

# *Thermoplastic Extrusion Die Parts*



2811 Fiechtner Drive Fargo, ND 58103

Phone: 701-277-9017

Fax: 701-277-7073

# STANDARD ALUMINUM DIE PARTS

# HD STEEL DIE PARTS

POS.	PART NUMBER	DESCRIPTION
1	ASE15100001	4" DOCTOR GATE
	ASE15200001	5" DOCTOR GATE
	ASE15300001	6" DOCTOR GATE
	ASE15400001	8" DOCTOR GATE
	ASE15500001	9" DOCTOR GATE
	ASE15600001	10" DOCTOR GATE
	ASE15700001	12" DOCTOR GATE
2	ASE15100002	4" DIE TROUGH
	ASE15200002	5" DIE TROUGH
	ASE15300002	6" DIE TROUGH
	ASE15400002	8" DIE TROUGH
	ASE15500002	9" DIE TROUGH
	ASE15600002	10" DIE TROUGH
	ASE15700002	12" DIE TROUGH
3	ASE15100007	4" REINFORCING ANGLE
	ASE15200007	5" REINFORCING ANGLE
	ASE15300007	6" REINFORCING ANGLE
	ASE15400007	8" REINFORCING ANGLE
	ASE15500007	9" REINFORCING ANGLE
	ASE15600007	10" REINFORCING ANGLE
	ASE15700007	12" REINFORCING ANGLE
4	ASE15100008	4" DIE GUIDE SIDE ROD
	ASE15200008	5" DIE GUIDE SIDE ROD
	ASE15300008	6" DIE GUIDE SIDE ROD
	ASE15400008	8" DIE GUIDE SIDE ROD
	ASE15500008	9" DIE GUIDE SIDE ROD
	ASE15600008	10" DIE GUIDE SIDE ROD
	ASE15700008	12" DIE GUIDE SIDE ROD
5	ASE15120000	4" DIE YOKE
	ASE15220000	5" DIE YOKE
	ASE15320000	6" DIE YOKE
	ASE15420000	8" DIE YOKE
	ASE15520000	9" DIE YOKE
	ASE15620000	10" DIE YOKE
	ASE15720000	12" DIE YOKE
6	ASE15000003	STANDARD DIE CLAW
7	ASE15000004	STANDARD DIE RUNNER
8	ASE15000005	STANDARD DIE LINK PLATE
9	ASE15110000	4" STANDARD DIE BAR
	ASE15210000	5" STANDARD DIE BAR
	ASE15310000	6" STANDARD DIE BAR
	ASE15410000	8" STANDARD DIE BAR
	ASE15510000	9" STANDARD DIE BAR
	ASE15610000	10" STANDARD DIE BAR
	ASE15710000	12" STANDARD DIE BAR
10	ASE150010000	STANDARD DIE PILLOW BLOCK
11	ASE150000060	DIE CLOSING SPRING 9.87# Z PLT
13	ASE15000101	CLEVIS 5/16-24 X 2-1/4
14	ASE15000301	RETAINING RING
15	ASE15100009	4" THREADED TORSION BAR
	ASE15200009	5" THREADED TORSION BAR
	ASE15300009	6" THREADED TORSION BAR
	ASE15400009	8" THREADED TORSION BAR
	ASE15500009	9" THREADED TORSION BAR
	ASE15600009	10" THREADED TORSION BAR
	ASE15700009	12" THREADED TORSION BAR
16	ASE90047A115	LOCK NUT 5/16-18
17	ASE92240A537	DIE RUNNER HEX SCREW
18	ASE93776A21	DIE RUNNER HEX NUT
19	H50250050Z	SCREW HEX HD CPZ ¼-20X1/2
20	H503Z0125Z	5/16-24 X 1-1/4 BOLT
21	NH032Z	HEX NUT Z 5/16-24
22	ASE91099A362	SCREW FHMS SS 10-32 X 5/8
23	ASE00088604	SCREW FHMS SS 10-32 X 1/4

POS.	PART NUMBER	DESCRIPTION
1	ASE15100001S	4" STEEL DOCTOR GATE
	ASE15200001S	5" STEEL DOCTOR GATE
	ASE15300001S	6" STEEL DOCTOR GATE
	ASE15400001S	8" STEEL DOCTOR GATE
	ASE15500001S	9" STEEL DOCTOR GATE
	ASE15600001S	10" STEEL DOCTOR GATE
	ASE15700001S	12" STEEL DOCTOR GATE
2	ASE15100002S	4" STEEL DIE TROUGH
	ASE15200002S	5" STEEL DIE TROUGH
	ASE15300002S	6" STEEL DIE TROUGH
	ASE15400002S	8" STEEL DIE TROUGH
	ASE15500002S	9" STEEL DIE TROUGH
	ASE15600002S	10" STEEL DIE TROUGH
	ASE15700002S	12" STEEL DIE TROUGH
3	ASE15100007	4" REINFORCING ANGLE
	ASE15200007	5" REINFORCING ANGLE
	ASE15300007	6" REINFORCING ANGLE
	ASE15400007	8" REINFORCING ANGLE
	ASE15500007	9" REINFORCING ANGLE
	ASE15600007	10" REINFORCING ANGLE
	ASE15700007	12" REINFORCING ANGLE
4	ASE15100008	4" DIE GUIDE SIDE ROD
	ASE15200008	5" DIE GUIDE SIDE ROD
	ASE15300008	6" DIE GUIDE SIDE ROD
	ASE15400008	8" DIE GUIDE SIDE ROD
	ASE15500008	9" DIE GUIDE SIDE ROD
	ASE15600008	10" DIE GUIDE SIDE ROD
	ASE15700008	12" DIE GUIDE SIDE ROD
5	ASE15120000	4" DIE YOKE
	ASE15220000	5" DIE YOKE
	ASE15320000	6" DIE YOKE
	ASE15420000	8" DIE YOKE
	ASE15520000	9" DIE YOKE
	ASE15620000	10" DIE YOKE
	ASE15720000	12" DIE YOKE
7	ASE15000004	STANDARD DIE RUNNER
8	ASE15000005	STANDARD DIE LINK PLATE
9	ASE15110000	4" STANDARD DIE BAR
	ASE15210000	5" STANDARD DIE BAR
	ASE15310000	6" STANDARD DIE BAR
	ASE15410000	8" STANDARD DIE BAR
	ASE15510000	9" STANDARD DIE BAR
	ASE15610000	10" STANDARD DIE BAR
	ASE15710000	12" STANDARD DIE BAR
10	ASE150010000	STANDARD DIE PILLOW BLOCK
11	ASE15000006	DIE CLOSING SPRING HD BLK
12	ASE15000020	DIE SWIVEL HANGER CLAW ASSEY
13	ASE15000101	CLEVIS 5/16-24 X 2-1/4
14	ASE15000301	RETAINING RING
15	ASE15100009	4" THREADED TORSION BAR
	ASE15200009	5" THREADED TORSION BAR
	ASE15300009	6" THREADED TORSION BAR
	ASE15400009	8" THREADED TORSION BAR
	ASE15500009	9" THREADED TORSION BAR
	ASE15600009	10" THREADED TORSION BAR
	ASE15700009	12" THREADED TORSION BAR
16	ASE90047A115	LOCK NUT 5/16-18
17	ASE92240A537	DIE RUNNER HEX SCREW
18	ASE93776A21	DIE RUNNER HEX NUT
19	H50250050Z	SCREW HEX HD CPZ ¼-20X1/2
20	H503Z0125Z	5/16-24 X 1-1/4 BOLT
21	NH032Z	HEX NUT Z 5/16-24
22	ASE91099A362	SCREW FHMS SS 10-32 X 5/8
23	ASE00088604	SCREW FHMS SS 10-32 X 1/4



www.epicsolutions.us  
www.advancedstripingequipment.com



**ADVANCED  
STRIPING  
EQUIPMENT**