

M7 Monitoring System

The M7 Monitoring System is the most accurate, versatile and cost-effective way to manage road striping and applications.

Ensure that your crews meet state specs. Troubleshoot small variances before they become serious.

Uses only the best products for accuracy and precision you can count on.

“When it comes to pavement markings data logging, we feel that Epic Solutions has set the industry standard with their M7 Material Monitoring System. From installation to customer service, they have been a trusted vendor for Griffin Pavement Striping, Inc. for over a decade. Their vast experience in the striping industry and commitment to product development has helped them create a reliable and effective tool that helps ensure proper pavement marking application.” – Chris Warren, VP Operations, Griffin Pavement Striping, Inc.

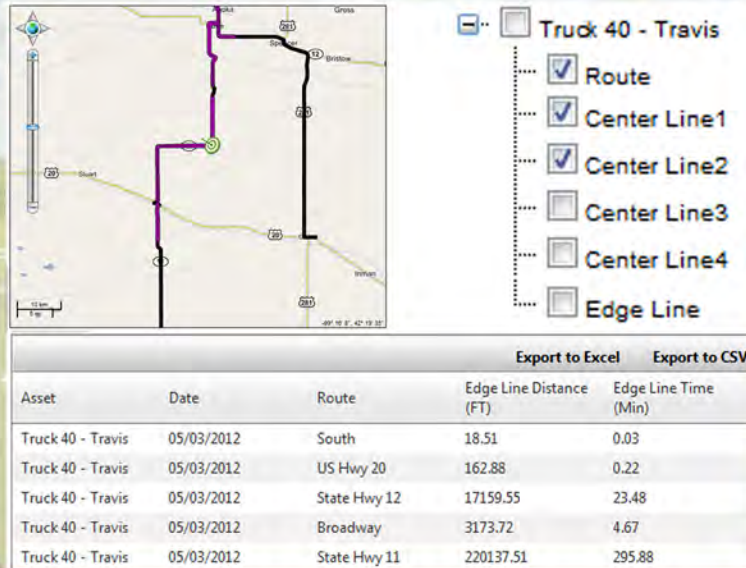
Features:

- Real time monitoring on what is happening.
- Allows operator to control material usage and alerts when line is out of spec.
- Installs on any brand of truck.
- PLC computer analysis of mil thickness, lbs of beads applied, material temperatures and so much more!

EPIC Solutions is committed to being technology leaders in the highway construction, roadway maintenance, and related industries. We build high quality machines to fill a need, that are safe and improve efficiency. Developed and road tested with the participation of industry experts, these products will perform for you.



Toll Free **866 414-4824**
www.epicsolutions.us



M7 Monitoring System

Features:

- Automatic logging option.
- Real time data upload to the cloud for viewing anytime, anywhere.
- Reports for job stored in Excel spreadsheets on computer for later viewing.

Know how much is being put down in real time with accurate GPS coordinates. Data can be plotted to customized maps.

With the rising costs of material; having an accurate monitoring system can save you thousands.

“We have enjoyed many of the benefits that the M7 Material Monitoring System has to offer. In our first year utilizing the system, it helped us identify that our operators were actually over applying reflective beads during long line thermo-plastic applications. We saved more than 45,000lbs of beads over the course of one season when compared to similar season totals. By giving the operators real time feedback, it gave them the opportunity to make adjustments during the application process which ensured uniform application rates throughout an entire project.”

EPIC Solutions is committed to being technology leaders in the highway construction, roadway maintenance, and related industries. We build high quality machines to fill a need, that are safe and improve efficiency. Developed and road tested with the participation of industry experts, these products will perform for you.



Toll Free **866 414-4824**
www.epicsolutions.us